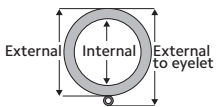


Wrought Iron Collection Rings



(L-R) Ring, Bypass C-Ring
Shown in Black. Available in all colors.

Available Sizes & Dimensions



1 3/8" Ring
External to eyelet: 2 13/16"
External: 2 1/2"
Internal: 2"



1 3/8" Bypass Ring
External to eyelet: 2 13/16"
External: 2 1/2"
Internal: 2"



1" Ring
External to eyelet: 2 3/8"
External: 2 1/8"
Internal: 1 5/8"



1" Bypass Ring
External to eyelet: 2 3/8"
External: 2 1/8"
Internal: 1 5/8"



Collection Details

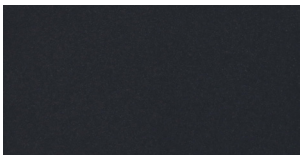
Features

Makes an architectural statement

True wrought iron

Compatible with corresponding poles

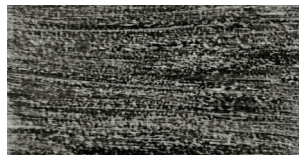
Finishes



Black



Chalk



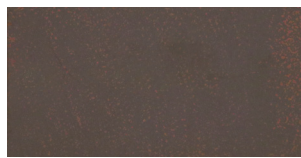
Graphite



Heirloom Copper



Iron Oxide



Rust