

## Wrought Iron Collection Finial: Otto



Shown in Heirloom Copper. Available in all colors.

### Available Sizes & Dimensions



**1 3/8" Otto**  
2 1/16" D x 3 3/4" H x 3 3/4" W



**1" Otto**  
2 1/16" D x 2 11/16" H x 2 11/16" W



# Collection Details

## Features

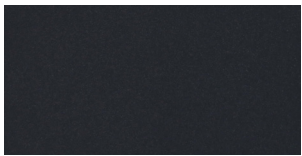
Makes an architectural statement

True wrought iron

Compatible with corresponding poles, rings and brackets

All finials compatible with corresponding 1 $\frac{3}{8}$ " Estate™ rods

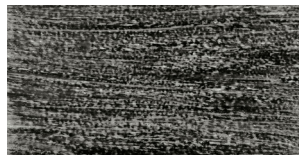
## Finishes



Black



Chalk



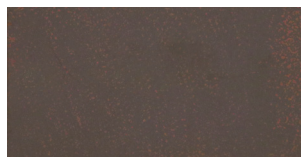
Graphite



Heirloom Copper



Iron Oxide



Rust