

## Designer Metals™ Collection

### Bypass C-Ring Baton



Close up shown in Black. Available in all colors.

### Available Sizes & Dimensions



**1 $\frac{3}{8}$ " Bypass C-Ring Baton**  
36" Long



# Collection Details

## Features

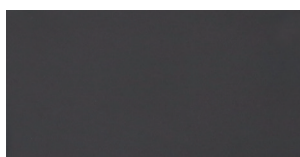
Sophisticated styles with striking finishes

Compatible with corresponding stationary pole

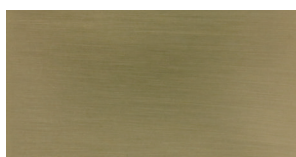
## Finishes



Antique Silver



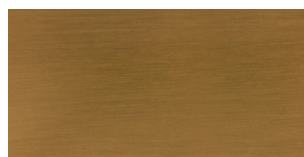
Black



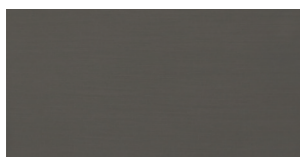
Brushed Bronze



Elegant Brass



Gilded Bronze



Gunmetal



Polished Nickel



Satin Nickel