

Wrought Iron Collection Stationary Poles



(L-R) Shown in 1" Black 1" Rust, 1" Iron Oxide. Available in all colors.

Available Sizes & Dimensions



1" STATIONARY POLE
Available Lengths: 6', 8'



Collection Details

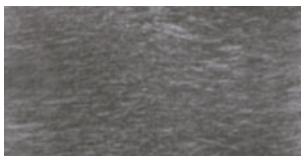
Features

Makes an architectural statement

True wrought iron

Compatible with corresponding finials, rings and brackets

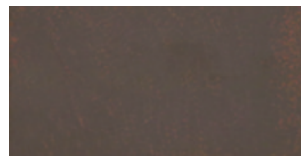
Finishes



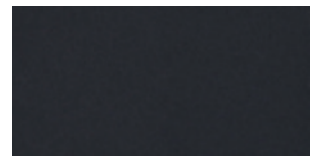
Antique Pewter



Iron Oxide



Rust



Black



Iron Gold