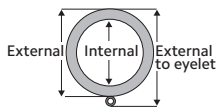


Wrought Iron Collection Rings

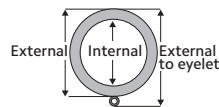


(L-R) Ring, Bypass C-Ring
 Shown in Black. Available in all colors.

Available Sizes & Dimensions



1" RING
 3³/₈" External to Eyelet,
 2¹/₈" External, 1¹/₈" Internal



1" BYPASS C-RING
 3³/₈" External to Eyelet,
 2¹/₈" External, 1¹/₈" Internal



Collection Details

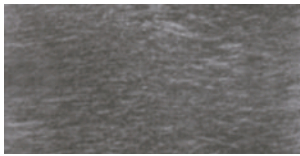
Features

Makes an architectural statement

True wrought iron

Compatible with corresponding poles

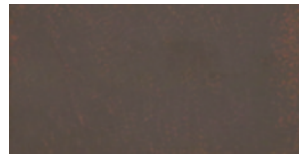
Finishes



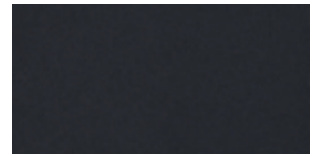
Antique Pewter



Iron Oxide



Rust



Black



Iron Gold