

Wrought Iron Collection Holdback Base



Shown in Iron Oxide. Available in all colors.

Available Sizes & Dimensions



HOLDBACK BASE
4¾"D x 4¾"H x 1"W



Collection Details

Features

Makes an architectural statement

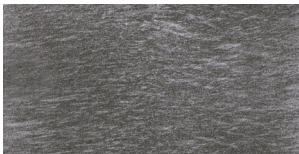
True wrought iron

Compatible with Wrought Iron finials or endcaps

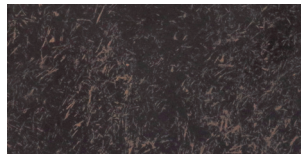
Finials can be added to the holdback to create a more decorative look



Finishes



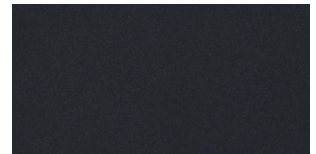
Antique Pewter



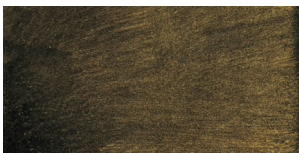
Iron Oxide



Rust



Black



Iron Gold