

Wood Trends™ Collection
Holdback: Transitional Square



Shown in Oil Rubbed Bronze. Available in all colors.

Available Sizes & Dimensions



4½" HOLDBACK
8⅞"D x 4½"H x 4½"W



3" HOLDBACK
6¼"D x 3"H x 3"W



Collection Details

Features

- Classic designs with beautiful finishes
- Compatible with all finial and pole sizes

Finishes



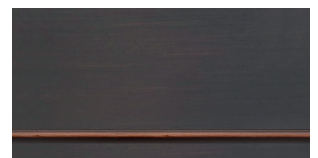
Polished Nickel



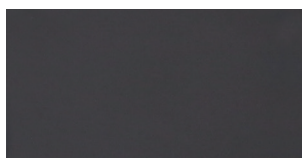
Satin Nickel



Antique Silver



Oil Rubbed Bronze



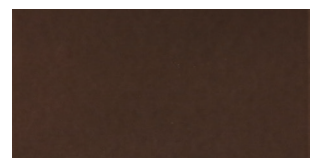
Black



Brushed Bronze



Gilded Bronze

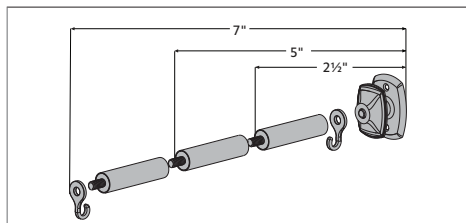


Caramel

Post Arm Details

4½" HOLDBACK POST ARM SIZE OPTIONS

2½" - 7"



3" HOLDBACK POST ARM SIZE OPTIONS

2½" - 5"

