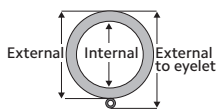


## Designer Metals™ Collection Rings

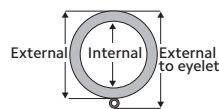


(L-R) Ring, Transitional Ring, Bypass C-Ring  
 Shown in Black. Available in all colors.

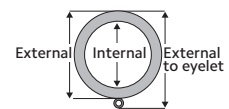
### Available Sizes & Dimensions



**1 3/8" RING**  
 2 1/2" External to Eyelet,  
 2" External, 1 3/4" Internal



**1 3/8" TRANSITIONAL RING**  
 2 1/2" External to Eyelet,  
 2" External, 1 3/4" Internal



**1 3/8" BYPASS C-RING**  
 2 1/2" External to Eyelet,  
 2" External, 1 3/4" Internal



# Collection Details

## Features

Sophisticated styles with striking finishes

Compatible with corresponding stationary pole

## Finishes



Polished Nickel



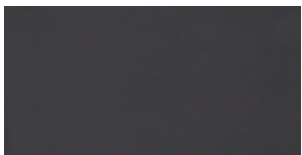
Satin Nickel



Antique Silver



Oil Rubbed Bronze



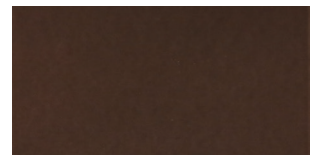
Black



Brushed Bronze



Gilded Bronze



Caramel