

Designer Metals™ Collection
Bypass C-Ring Baton



Close up shown in Black. Available in all colors.

Available Sizes & Dimensions



1³/₈" BYPASS C-RING BATON
36" Long



Collection Details

Features

Sophisticated styles with striking finishes

Compatible with corresponding stationary pole

Finishes



Posished Nickel



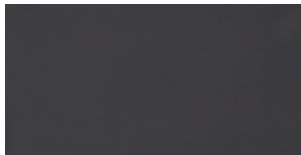
Satin Nickel



Antique Silver



Oil Rubbed Bronze



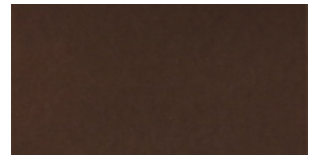
Black



Brushed Bronze



Gilded Bronze



Caramel