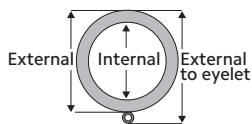


Buckingham[®]Collection Rings

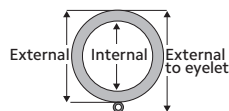


(L-R) 3" Fluted Dark Walnut, 2" Rope Venetian, 1 3/8" Smooth Shimmer.
 Leaf Ring available in 2" only. All rings available in all colors.

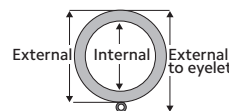
Available Sizes & Dimensions



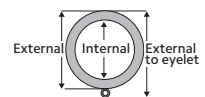
3" FLUTED RING
 5 1/2" External to Eyelet,
 5 1/8" External, 3 3/8" Internal



2" ROPE RING
 4 3/8" External to Eyelet,
 3 3/4" External, 2 1/4" Internal



2" FLUTED RING
 4 1/4" External to Eyelet,
 3 3/4" External, 2 1/8" Internal



1 3/8" SMOOTH RING
 3 1/4" External to Eyelet,
 2 7/8" External, 1 1/8" Internal



Collection Details

Features

Handcrafted in the USA

Hand finished in exquisite detail

Compatible with corresponding stationary pole

Buckingham® is a custom made product,
for this reason returns are not accepted

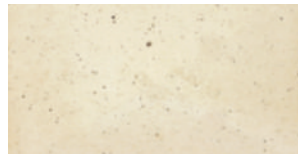
Finishes



Moonglow



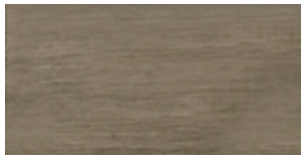
Sterling



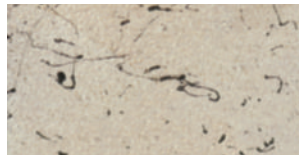
Old World White



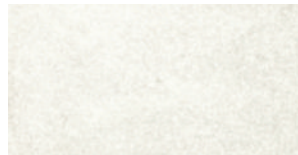
Venetian



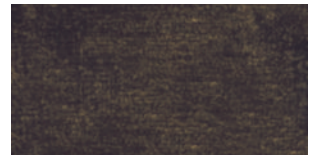
Camden



Shimmer



Cottage White



Black Gold



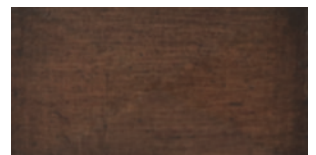
Distressed Oak



Castle Rock



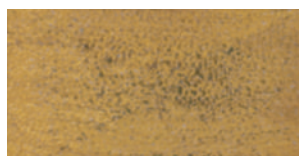
Slate



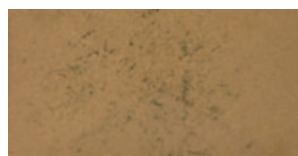
Dark Walnut



Winterwood



Ornate



Aged Gold